

**Five Tips to
accessing the
Disabled Students'
Allowance (DSA)**

brain in hand

DSA is a grant from the UK Government to cover essential support costs for neurodiverse students, mental health conditions, or physical/sensory disabilities.

The fund can cover specialist equipment, non-medical support workers (e.g., a sign language interpreter, note taker, mentor, etc.) and travel costs.

It is available to residents of:

- England,
- Scotland,
- Wales,
- Northern Ireland.

Students do not need to pay DSA back for any support received.





Here are a few tips

1

Know if you're eligible:

You can apply to DSA if you have a difficulty that affects your ability to study, such as:



A specific learning difficulty

e.g. dyslexia or ADHD



A mental health condition

e.g. anxiety or depression



Being autistic or neurodiverse



A physical or sensory disability

e.g. cerebral palsy or hearing loss



A long term health condition

e.g. cancer, chronic heart disease or HIV

2

Share your needs:

It's important to disclose your needs to your university's Disability or Student Support Services. They are there to support you and can play a crucial role in helping you access DSA.

The process is discreet. If you are comfortable doing so discuss your needs with them.

Be open and honest, as this will allow them to provide you with appropriate guidance and support.

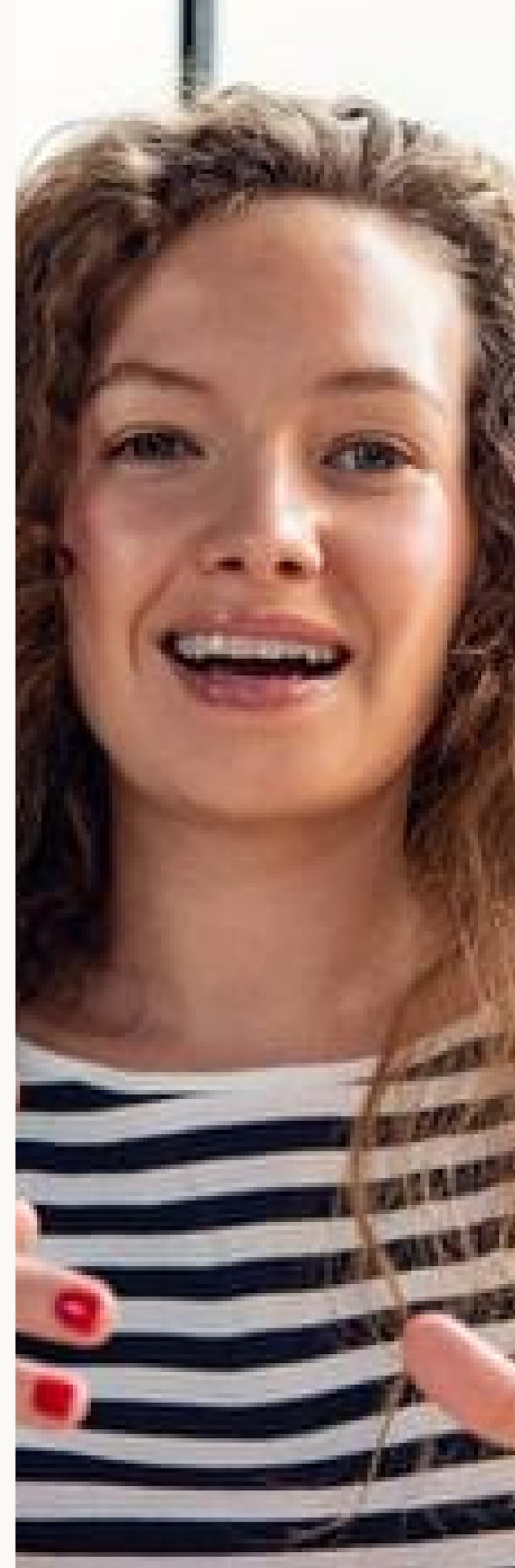
3

Gather all info before you start

To apply for DSA, you'll need to provide some supporting evidence.

This can include medical or diagnostic reports, letters from healthcare professionals, or assessments from educational psychologists.

Click [here](#) to find out what is required.





4

Know how to apply

How you apply for Disabled Students' Allowance (DSA) depends on whether you're studying full-time, part-time or post-grad. Click [here](#) to know the difference.

Plus, full-time graduates will take a different application path depending on if they have student finance or not.

5

Know where to apply

You must apply for DSA with the funding body based on where you have permanent residence in the UK. Your university address is temporary, so don't use that as your point of reference. **Click on the applicable link below.**



England: Student Finance England (SFE)



Scotland: Student Awards Agency Scotland (SAAS)



Wales: Student Finance Wales



Northern Ireland: Student Finance NI



**What to expect
next...**



Find out if your application has been approved

You will receive a letter from your funding body asking you to arrange a needs assessment. They will provide you with a link to find your nearest centre. Your assessment can be done in person or online, depending on your preference.



Meet with a DSA Needs Assessor

This may sound very formal. It's not. It is a collaborative discussion designed to give you the best support available. Once the Assessor knows more about your needs, they will discuss their recommendations with you (in the same session.)

If you are comfortable with these suggestions, they will write a report and send it directly to your funding body.

**Be open-minded about what's suggested.
Having too much support is better
than not having enough.**



Look out for your entitlement letter

You'll receive a second letter from your funding body. This will be sent to the postal / email address that was supplied at the time you applied.

The letter is called the “DSA2 letter” and will include the approved support and contact details of the suppliers who will provide it for you.

Once you've received the letter, contact the suppliers as soon as possible so you can receive your equipment and support at the earliest opportunity.

And don't be afraid to contact your assessment centre again afterwards if your needs change or you realise there's something else that could help you.



**Remember, the DSA is designed to
empower you and provide equal
opportunities for success.**

**For more info visit the official website:
www.gov.uk/disabled-students-allowance-dsa**